



TECHNICAL GUIDE

95.5% SINGLE STAGE GAS-FIRED RESIDENTIAL MULTI-POSITION GAS FURNACES

MODELS: TG9S

**NATURAL GAS
40 - 130 MBH INPUT**



Due to continuous product improvement, specifications are subject to change without notice.

Visit us on the web at www.york.com for the most up-to-date technical information.

Additional efficiency rating information can be found at www.gamanet.org.

DESCRIPTION

These compact units employ induced combustion, reliable hot surface ignition and high heat transfer aluminized tubular heat exchangers. The units are factory shipped for installation in upflow or horizontal applications and may be converted for downflow applications.

These furnaces are designed for residential installation in a basement, closet, alcove, attic, recreation room or garage and are also ideal for commercial applications. All units are factory assembled, wired and tested to assure safe dependable and economical installation and operation.

These units are Category IV listed and may be vented either through side wall or roof applications using approved plastic combustion air and vent piping.

WARRANTY

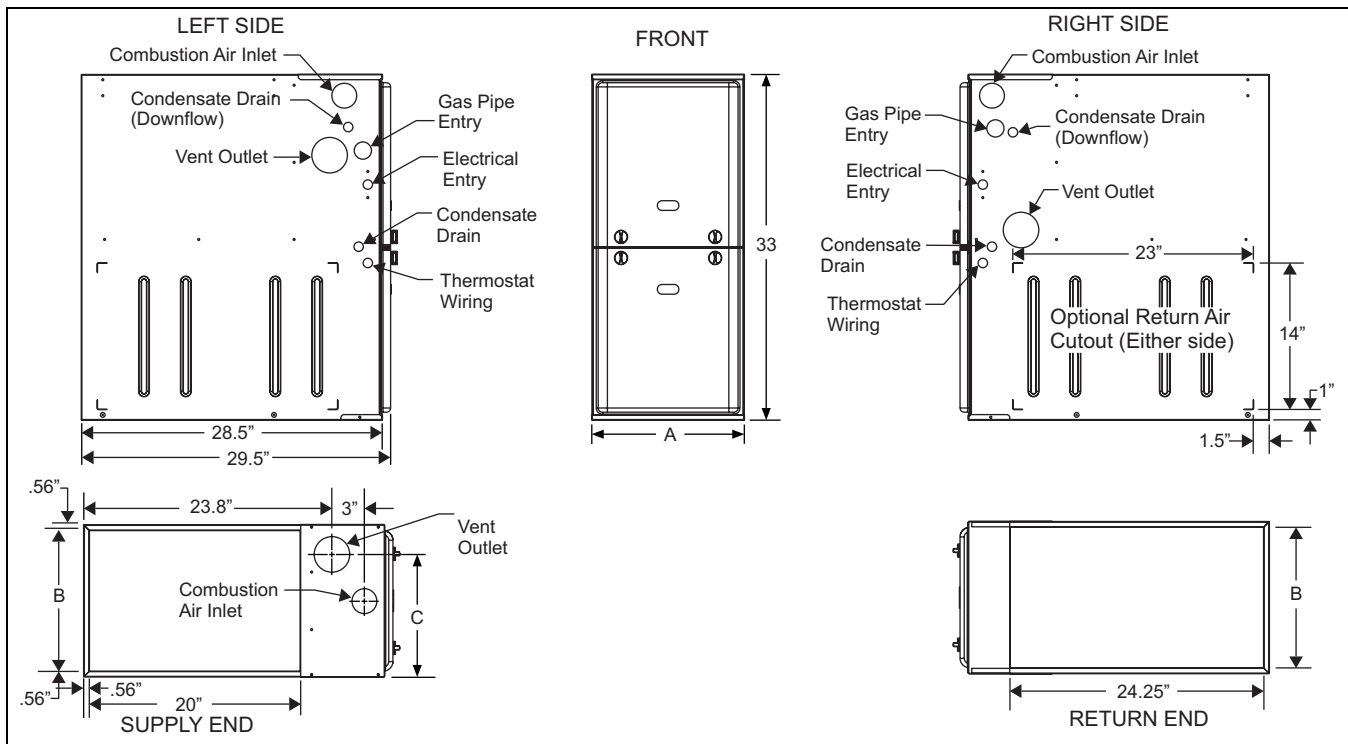
Lifetime limited warranty on the heat exchanger.

10-year heat exchanger warranty on commercial applications.

5-year limited parts warranty.

FEATURES

- Easily applied in upflow, horizontal left or right, or downflow installation with minimal conversion necessary.
- Compact, easy to install, ideal height 33" tall cabinet.
- Blower-off delay for cooling SEER improvement.
- Easy access to controls to connect power/control wiring.
- Built-in, high level self diagnostics with fault code displays standard on integrated control module for reliable operation.
- Low unit amp requirement for easy replacement application.
- Single wire twinning or staging feature available.
- All models are convertible to use propane (LP) gas.
- Electronic Hot Surface Ignition saves fuel cost with increased dependability and reliability.
- 100% shut off main gas valve for extra safety.
- 4 speed, direct drive PSC motor.
- 24V, 40 VA control transformer and blower relay supplied for add-on cooling.
- Hi-tech tubular aluminized steel primary heat exchanger.
- Secondary heat exchanger made of corrosion resistant stainless steel materials.
- Timed on, adjustable off blower capability for maximum comfort.
- Blower door safety switch.
- Solid removable bottom panel allows easy conversion.
- Airflow leakage less than 1% of nominal airflow at ductblaster conditions.
- No knockouts to deal with, making installation easier.
- Movable duct connector flanges for application flexibility.
- Quiet inducer operation.
- Inducer rotates for easy conversion of venting options.
- Fully supported blower assembly for easy access and removal of blower.
- External air filters used for maximum flexibility in meeting customers IAQ needs.
- Protection included from air intake, exhaust vent, or condensate blockage.
- Patent pending self priming internal condensate trap design for easy installation.
- Venting applications - may be installed as either 2-pipe (sealed combustion) or single-pipe vent (using indoor combustion air).
- No special vent termination required.
- 1/4 turn knobs provided for easy door removal.



Cabinet & Duct Dimensions

| BTUH (kW) Input | Nominal CFM (m ³ /min) | Cabinet Size | Cabinet Dimensions (Inches) | | | Approximate Operating Weights |
|--------------------|--------------------------------------|-----------------|-----------------------------|--------|---------|----------------------------------|
| | | | A | B | C | Lbs |
| TG9S040A08MP11 | 800 | A | 14 1/2 | 13 3/8 | 11 3/4 | 113 |
| TG9S060A10MP11 | 1000 | A | 14 1/2 | 13 3/8 | 11 3/4 | 118 |
| TG9S060B12MP11 | 1200 | B | 17 1/2 | 16 3/8 | 13 1/4 | 122 |
| TG9S080B12MP11 | 1200 | B | 17 1/2 | 16 3/8 | 14 3/4 | 126 |
| TG9S080C16MP11 | 1600 | C | 21 | 19 7/8 | 16 1/2 | 136 |
| TG9S080C22MP11 | 2200 | C | 21 | 19 7/8 | 16 1/2 | 139 |
| TG9S100C16MP11 | 1600 | C | 21 | 19 7/8 | 18 1/4 | 142 |
| TG9S100C20MP11 | 2000 | C | 21 | 19 7/8 | 18 1/4 | 145 |
| TG9S120D16MP11 | 1600 | D | 24 1/2 | 23 3/8 | 21 3/4 | 153 |
| TG9S120D20MP11 | 2000 | D | 24 1/2 | 23 3/8 | 21 3/4 | 156 |
| TG9S130D20MP11 | 2000 | D | 24 1/2 | 23 3/8 | No Hole | 160 |

Ratings & Physical / Electrical Data

| Input | Output MBH | Nominal Airflow CFM | Total Unit Amps | AFUE | Air Temp. Rise °F | Max Over-Current Protect | Min. wire Size (awg) @ 75 ft one way | Max. Outlet Air Temp |
|----------------|---------------|---------------------------|--------------------|------|-------------------------|--------------------------------|--|-------------------------|
| | | | | | °F | | | °F |
| TG9S040A08MP11 | 38 | 800 | 8.0 | 95.5 | 30-60 | 15 | 14 | 155 |
| TG9S060A10MP11 | 57 | 1000 | 10.0 | 95.5 | 30-60 | 15 | 14 | 155 |
| TG9S060B12MP11 | 57 | 1200 | 10.0 | 95.5 | 30-60 | 15 | 14 | 160 |
| TG9S080B12MP11 | 76 | 1200 | 10.0 | 95.5 | 35-65 | 15 | 14 | 165 |
| TG9S080C16MP11 | 76 | 1600 | 11.5 | 95.5 | 35-65 | 15 | 14 | 155 |
| TG9S080C22MP11 | 76 | 2200 | 17.0 | 95.5 | 35-65 | 20 | 12 | 155 |
| TG9S100C16MP11 | 95 | 1600 | 11.5 | 95.5 | 35-65 | 15 | 14 | 165 |
| TG9S100C20MP11 | 95 | 2000 | 17.0 | 95.5 | 35-65 | 20 | 12 | 155 |
| TG9S120D16MP11 | 114 | 1600 | 11.5 | 95.5 | 40-70 | 15 | 14 | 170 |
| TG9S120D20MP11 | 114 | 2000 | 17.0 | 95.5 | 35-65 | 20 | 12 | 160 |
| TG9S130D20MP11 | 123.5 | 2000 | 17.0 | 95.5 | 45-75 | 20 | 12 | 165 |

Annual Fuel Utilization Efficiency (AFUE) numbers are determined in accordance with DOE Test procedures.
 Wire size and over current protection must comply with the National Electrical Code (NFPA-70-latest edition) and all local codes.
 The furnace shall be installed so that the electrical components are protected from water.

FILTER PERFORMANCE

The airflow capacity data published in the "Blower Performance" table listed above represents blower performance WITHOUT filters.

All applications of these furnaces require the use of field installed air filters. All filter media and mounting hardware or provisions must be field installed external to the furnace cabinet. DO NOT attempt to install any filters inside the furnace.

NOTE: Single side return above 1800 CFM is approved as long as the filter velocity does not exceed filter manufacturer's recommendation and a transition is used to allow use on a 20x25 filter.

Recommended Filter Sizes (High velocity 600 FPM)

| CFM | Cabinet Size | Side (in) | Bottom (in) |
|------|--------------|-------------|-------------|
| 800 | A | 16 x 25 | 14 x 25 |
| 1000 | A | 16 x 25 | 14 x 25 |
| 1200 | A | 16 x 25 | 14 x 25 |
| 1200 | B | 16 x 25 | 16 x 25 |
| 1600 | B | 16 x 25 | 16 x 25 |
| 1600 | C | 16 x 25 | 20 x 25 |
| 2000 | C | (2) 16 x 25 | 20 x 25 |
| 2200 | C | (2) 16 x 25 | 20 x 25 |
| 2000 | D | (2) 16 x 25 | 22 x 25 |

NOTES:

- Air velocity through throwaway type filters may not exceed 300 feet per minute (91.4 m/min). All velocities over this require the use of high velocity filters.
- Do not exceed 1800 CFM using a single side return and a 16x25 filter. For CFM greater than 1800, you may use two side returns or one side and the bottom or one return with a transition to allow use of a 20x25 filter.

Unit Clearances to Combustibles

| Application | Upflow | Downflow | Horizontal |
|--------------|-------------|--------------------------|-------------|
| Top | 1" | 0" | 0" |
| Vent | 0" | 0" | 0" |
| Rear | 0" | 0" | 0" |
| Side | 0" | 0" | 1" |
| Front* | 0" | 0" | 0" |
| Floor | Combustible | Combustible ¹ | Combustible |
| Closet | Yes | Yes | Yes |
| Line Contact | No | No | Yes |

1. For combustible floors only when used with special sub-base.

* - 24" clearance in front and 18" on side recommended for service access. All furnaces approved for alcove and attic installation.

ACCESSORIES

PROPANE (LP) CONVERSION KIT -

S1-1NP0347 - All Models except 130K Model

S1-1NP0501 - 130K Model

This accessory conversion kit may be used to convert natural gas (N) units for propane (LP) operation.

CONCENTRIC VENT TERMINATION -

S1-1CT0302 (2")

S1-1CT0303 (3")

For use through rooftop, sidewall. Allows combustion air to enter and exhaust to exit through single common hole. Eliminates unsightly elbows for a cleaner installation.

SIDEWALL VENT TERMINATION KIT -

S1-1HT0901 (3")

S1-1HT0902 (2")

For use on sidewall, two-pipe installations only. Provide a more attractive termination for locations where the terminal is visible on the side of the home.

CONDENSATE NEUTRALIZER KIT - 1NK0301

Neutralizer cartridge has a 1/2" plastic tube fittings for installation in the drain line. Calcium carbonate refill media is also available from the Source 1 Parts (p/n 026-30228-000).

SIDE RETURN FILTER RACKS -

S1-1SR0200 - All Models

S1-1SR0402 - All Models

S1-1SF0101 - All Models (Upflow Only)

BOTTOM RETURN FILTER RACKS -

S1-1BR0514 or 1BR0614 - For 14-1/2" cabinets

S1-1BR0517 or 1BR0617 - For 17-1/2" cabinets

S1-1BR0521 or 1BR0621 - For 21" cabinets

S1-1BR0524 or 1BR0624 - For 24-1/2" cabinets

1BR05xx series are galvanized steel filter racks. 1BR06xx are pre-painted steel filter racks to match the appearance of the furnace cabinet.

COMBUSTIBLE FLOOR BASE KIT -

For installation of these furnaces in downflow applications directly onto combustible flooring material, These kits are required to prevent potential overheating situations. tible floor base kit provides access for combustible airflow.

S1-1CB0514 - For 14-1/2" cabinets

S1-1CB0517 - For 17-1/2" cabinets

S1-1CB0521 - For 21" cabinets

S1-1CB0524 - For 24-1/2" cabinets

EAC TRANSITION KITS -

For installation of EAC accessories with these furnaces to provide easy transition of return airflow through the EAC to get the proper sealing and reduced airflow leakage.

S1-1TK1001 - For all models using side return

S1-1TK1014 - For 14-1/2" cabinets using bottom return

S1-1TK1017 - For 17-1/2" cabinets using bottom return

S1-1TK1021 - For 21" cabinets using bottom return

S1-1TK1024 - For 24-1/2" cabinets using bottom return

HIGH ALTITUDE PRESSURE SWITCHES -

For installation where the altitude is less than 5,000 feet it is not required that the pressure switch be changed. For altitudes above 5,000 feet, see kits below.

S1-1PS3306 - 040, 080

S1-1PS3307 - 060

S1-1PS3302 - 100, 120, 130

ROOM THERMOSTATS - A wide selection of compatible thermostats are available to provide optimum performance and features for any installation.

1H/1C, manual change-over electronic non-programmable thermostat.

1H/1C, auto/manual changeover, electronic programmable, deluxe 7-day, thermostat.

1H/1C, auto/manual changeover, electronic programmable.

* For the most current accessory information, refer to the price book or consult factory.

Blower Performance CFM - Any Position (without filter) - Bottom Return

| Models | Speed | Bottom Airflow Data (SCFM) | | | | | | | | | |
|----------------|-------------|--------------------------------|------|------|------|------|------|------|------|------|------|
| | | Ext. Static Pressure (in. H2O) | | | | | | | | | |
| | | 0.1 | 0.2 | 0.3 | 0.4 | 0.5 | 0.6 | 0.7 | 0.8 | 0.9 | 1.0 |
| TG9S040A08MP11 | High | 1128 | 1077 | 1035 | 996 | 950 | 891 | 842 | 781 | 708 | 646 |
| | Medium High | 934 | 909 | 867 | 834 | 818 | 780 | 745 | 696 | 631 | 584 |
| | Medium Low | 746 | 735 | 714 | 679 | 653 | 629 | 596 | 585 | 547 | 494 |
| | Low | 676 | 652 | 627 | 601 | 581 | 542 | 516 | 474 | 441 | 383 |
| TG9S060A10MP11 | High | 1360 | 1290 | 1230 | 1165 | 1103 | 1043 | 983 | 925 | 820 | 776 |
| | Medium High | 1251 | 1198 | 1140 | 1089 | 1038 | 979 | 916 | 854 | 790 | 718 |
| | Medium Low | 1081 | 1062 | 1015 | 964 | 917 | 871 | 819 | 767 | 710 | 634 |
| | Low | 909 | 900 | 852 | 812 | 769 | 739 | 712 | 662 | 612 | 547 |
| TG9S060B12MP11 | High | 1492 | 1442 | 1378 | 1325 | 1243 | 1176 | 1075 | 966 | 849 | 655 |
| | Medium High | 1236 | 1201 | 1161 | 1139 | 1082 | 1011 | 919 | 830 | 715 | 590 |
| | Medium Low | 986 | 950 | 961 | 916 | 872 | 831 | 757 | 703 | 600 | 510 |
| | Low | 824 | 795 | 783 | 744 | 713 | 659 | 624 | 554 | 489 | 389 |
| TG9S080B12MP11 | High | 1597 | 1537 | 1484 | 1435 | 1370 | 1286 | 1230 | 1155 | 1075 | 925 |
| | Medium High | 1338 | 1307 | 1273 | 1223 | 1179 | 1123 | 1065 | 998 | 928 | 812 |
| | Medium Low | 1113 | 1094 | 1077 | 1043 | 1008 | 972 | 924 | 868 | 803 | 798 |
| | Low | 937 | 916 | 900 | 877 | 854 | 817 | 775 | 718 | 639 | 560 |
| TG9S080C16MP11 | High | 1919 | 1865 | 1802 | 1738 | 1671 | 1600 | 1517 | 1414 | 1322 | 1201 |
| | Medium High | 1532 | 1533 | 1513 | 1499 | 1465 | 1416 | 1352 | 1283 | 1198 | 1084 |
| | Medium Low | 1232 | 1313 | 1291 | 1280 | 1250 | 1209 | 1207 | 1148 | 1055 | 937 |
| | Low | 826 | 821 | 853 | 858 | 838 | 817 | 794 | 776 | 760 | 711 |
| TG9S080C22MP11 | High | 2529 | 2435 | 2338 | 2256 | 2162 | 2041 | 1920 | 1794 | 1654 | 1501 |
| | Medium High | 2166 | 2111 | 2070 | 2001 | 1927 | 1849 | 1719 | 1614 | 1499 | 1344 |
| | Medium Low | 1697 | 1685 | 1664 | 1631 | 1586 | 1531 | 1466 | 1393 | 1315 | 1185 |
| | Low | 1383 | 1377 | 1358 | 1336 | 1285 | 1244 | 1199 | 1147 | 1048 | 925 |
| TG9S100C16MP11 | High | 1909 | 1880 | 1823 | 1776 | 1706 | 1637 | 1562 | 1474 | 1375 | 1252 |
| | Medium High | 1465 | 1463 | 1469 | 1485 | 1477 | 1416 | 1386 | 1324 | 1250 | 1114 |
| | Medium | 1190 | 1222 | 1216 | 1215 | 1224 | 1189 | 1158 | 1145 | 1087 | 996 |
| | Low | 787 | 834 | 819 | 836 | 819 | 810 | 790 | 761 | 690 | 707 |
| TG9S100C20MP11 | High | 2284 | 2205 | 2114 | 2021 | 1934 | 1848 | 1752 | 1653 | 1505 | 1397 |
| | Medium High | 1967 | 1905 | 1824 | 1763 | 1712 | 1628 | 1551 | 1473 | 1379 | 1213 |
| | Medium Low | 1610 | 1563 | 1513 | 1480 | 1430 | 1367 | 1319 | 1261 | 1101 | 1012 |
| | Low | 1326 | 1304 | 1267 | 1232 | 1183 | 1143 | 1080 | 1003 | 871 | 798 |
| TG9S120D16MP11 | High | 2020 | 1994 | 1958 | 1878 | 1805 | 1740 | 1647 | 1560 | 1445 | 1294 |
| | Medium High | 1551 | 1559 | 1549 | 1520 | 1494 | 1451 | 1383 | 1334 | 1253 | 1145 |
| | Medium Low | 1270 | 1267 | 1269 | 1269 | 1254 | 1227 | 1185 | 1121 | 1051 | 985 |
| | Low | 932 | 916 | 905 | 894 | 876 | 828 | 803 | 725 | 754 | 696 |
| TG9S120D20MP11 | High | 2341 | 2245 | 2153 | 2072 | 1977 | 1876 | 1769 | 1642 | 1506 | 1306 |
| | Medium High | 2002 | 1952 | 1878 | 1823 | 1739 | 1657 | 1563 | 1458 | 1322 | 1185 |
| | Medium Low | 1615 | 1579 | 1533 | 1473 | 1430 | 1368 | 1282 | 1186 | 1091 | 953 |
| | Low | 1352 | 1295 | 1259 | 1245 | 1190 | 1141 | 1076 | 998 | 938 | 820 |
| TG9S130D20MP11 | High | 2412 | 2329 | 2247 | 2173 | 2047 | 1980 | 1887 | 1777 | 1655 | 1511 |
| | Medium High | 2040 | 2004 | 1948 | 1876 | 1786 | 1738 | 1656 | 1562 | 1461 | 1314 |
| | Medium Low | 1614 | 1591 | 1549 | 1531 | 1459 | 1400 | 1335 | 1267 | 1180 | 1061 |
| | Low | 1327 | 1294 | 1257 | 1224 | 1198 | 1171 | 1124 | 1036 | 944 | 848 |

NOTES:

1. Airflow expressed in standard cubic feet per minute (CFM).
2. Motor voltage at 115 V.

Blower Performance CFM - Any Position (without filter) - Left Side Return

| Models | Speed | Left Side Airflow Data (SCFM) | | | | | | | | | |
|----------------|-------------|--------------------------------|------|------|------|------|------|------|------|------|------|
| | | Ext. Static Pressure (in. H2O) | | | | | | | | | |
| | | 0.1 | 0.2 | 0.3 | 0.4 | 0.5 | 0.6 | 0.7 | 0.8 | 0.9 | 1.0 |
| TG9S040A08MP11 | High | 1131 | 1091 | 1053 | 1003 | 965 | 921 | 862 | 800 | 733 | 659 |
| | Medium High | 982 | 959 | 935 | 887 | 846 | 795 | 745 | 675 | 628 | 595 |
| | Medium Low | 772 | 736 | 715 | 689 | 661 | 642 | 599 | 568 | 531 | 493 |
| | Low | 636 | 618 | 585 | 569 | 546 | 522 | 486 | 460 | 455 | 370 |
| TG9S060A10MP11 | High | 1431 | 1375 | 1304 | 1244 | 1178 | 1109 | 1040 | 963 | 861 | 805 |
| | Medium High | 1280 | 1226 | 1171 | 1117 | 1059 | 1004 | 930 | 865 | 781 | 731 |
| | Medium Low | 1099 | 1050 | 1008 | 970 | 919 | 866 | 814 | 759 | 710 | 626 |
| | Low | 914 | 876 | 842 | 812 | 770 | 728 | 694 | 661 | 612 | 545 |
| TG9S060B12MP11 | High | 1470 | 1406 | 1361 | 1309 | 1241 | 1155 | 1060 | 920 | 775 | 628 |
| | Medium High | 1211 | 1186 | 1139 | 1101 | 1042 | 980 | 896 | 796 | 681 | 545 |
| | Medium Low | 970 | 957 | 927 | 889 | 853 | 796 | 745 | 660 | 568 | 450 |
| | Low | 793 | 781 | 756 | 724 | 694 | 653 | 585 | 530 | 469 | 382 |
| TG9S080B12MP11 | High | 1605 | 1562 | 1514 | 1454 | 1393 | 1330 | 1251 | 1169 | 1073 | 940 |
| | Medium High | 1372 | 1318 | 1280 | 1255 | 1205 | 1161 | 1093 | 1023 | 943 | 849 |
| | Medium Low | 1087 | 1073 | 1052 | 1003 | 993 | 953 | 897 | 843 | 775 | 709 |
| | Low | 916 | 896 | 881 | 854 | 831 | 802 | 757 | 708 | 642 | 574 |
| TG9S080C16MP11 | High | 1956 | 1907 | 1846 | 1778 | 1717 | 1647 | 1573 | 1483 | 1353 | 1209 |
| | Medium High | 1543 | 1543 | 1516 | 1504 | 1477 | 1446 | 1382 | 1309 | 1202 | 1099 |
| | Medium Low | 1238 | 1241 | 1243 | 1241 | 1252 | 1242 | 1201 | 1140 | 1074 | 967 |
| | Low | 906 | 902 | 903 | 910 | 888 | 866 | 859 | 829 | 795 | 743 |
| TG9S080C22MP11 | High | 2585 | 2492 | 2405 | 2321 | 2232 | 2137 | 2015 | 1902 | 1745 | 1577 |
| | Medium High | 2098 | 2067 | 2036 | 1982 | 1928 | 1860 | 1767 | 1670 | 1549 | 1331 |
| | Medium Low | 1619 | 1628 | 1614 | 1584 | 1545 | 1488 | 1424 | 1339 | 1216 | 1121 |
| | Low | 1338 | 1347 | 1327 | 1301 | 1262 | 1199 | 1138 | 1078 | 1019 | 938 |
| TG9S100C16MP11 | High | 1828 | 1829 | 1789 | 1768 | 1727 | 1671 | 1601 | 1505 | 1390 | 1272 |
| | Medium High | 1422 | 1444 | 1437 | 1424 | 1396 | 1326 | 1301 | 1253 | 1200 | 1100 |
| | Medium | 1224 | 1229 | 1243 | 1234 | 1219 | 1193 | 1168 | 1135 | 1088 | 977 |
| | Low | 813 | 819 | 818 | 814 | 783 | 762 | 756 | 732 | 690 | 642 |
| TG9S100C20MP11 | High | 2391 | 2286 | 2165 | 2079 | 2004 | 1934 | 1839 | 1692 | 1560 | 1366 |
| | Medium High | 1945 | 1878 | 1838 | 1782 | 1694 | 1642 | 1565 | 1451 | 1334 | 1163 |
| | Medium Low | 1549 | 1530 | 1495 | 1430 | 1431 | 1365 | 1284 | 1192 | 1097 | 1022 |
| | Low | 1256 | 1229 | 1189 | 1159 | 1089 | 1033 | 1008 | 950 | 871 | 784 |
| TG9S120D16MP11 | High | 1998 | 1987 | 1914 | 1858 | 1798 | 1721 | 1629 | 1530 | 1417 | 1303 |
| | Medium High | 1512 | 1506 | 1492 | 1467 | 1441 | 1406 | 1342 | 1280 | 1206 | 1097 |
| | Medium Low | 1217 | 1219 | 1210 | 1185 | 1174 | 1148 | 1112 | 1063 | 1012 | 937 |
| | Low | 892 | 870 | 859 | 843 | 814 | 798 | 790 | 745 | 740 | 677 |
| TG9S120D20MP11 | High | 2343 | 2253 | 2167 | 2071 | 1979 | 1881 | 1785 | 1668 | 1473 | 1351 |
| | Medium High | 1954 | 1892 | 1846 | 1781 | 1714 | 1637 | 1548 | 1429 | 1238 | 1171 |
| | Medium Low | 1596 | 1539 | 1511 | 1458 | 1399 | 1341 | 1254 | 1180 | 942 | 988 |
| | Low | 1299 | 1261 | 1229 | 1177 | 1111 | 1053 | 993 | 937 | 882 | 782 |
| TG9S130D20MP11 | High | 2425 | 2336 | 2255 | 2157 | 2046 | 1966 | 1865 | 1758 | 1615 | 1420 |
| | Medium High | 1979 | 1959 | 1899 | 1825 | 1773 | 1686 | 1619 | 1516 | 1376 | 1225 |
| | Medium Low | 1582 | 1567 | 1540 | 1488 | 1443 | 1406 | 1336 | 1252 | 1146 | 1033 |
| | Low | 1305 | 1287 | 1239 | 1194 | 1159 | 1126 | 1062 | 1003 | 943 | 831 |

NOTES:

- Airflow expressed in standard cubic feet per minute (CFM).
- Return air is through side opposite motor (left side).
- Motor voltage at 115 V.
- Airflow through across motor side (right side) may be slightly less than the data shown above.

Subject to change without notice. Printed in U.S.A.
Copyright © 2008 by Johnson Controls, Inc. All rights reserved.

400991-YTG-B-0708
Supersedes: 400991-YTG-A-0608

Johnson Controls Unitary Products
5005 York Drive
Norman, OK 73069