

SUBMITTAL DATA: PKA-A18GA & PUZ-A18NHA

18,000 Btu/h WALL-MOUNTED HEAT PUMP SYSTEM

Job Name: _____ Location: _____ Date: _____

Purchaser: _____ Engineer: _____

Submitted to: _____ For Reference Approval Construction

Unit Designation: _____ Schedule No.: _____

GENERAL FEATURES

- Limited warranty: one year on parts and defects and six years on compressor
- Compact side-discharge outdoor unit
- Zone control
- Hard-wired, wall-mounted remote controller (PAR-21MAA)
- Automatic fan speed control
- Quiet operation – both, indoor and outdoor units
- Auto restart following a power outage
- Self check function
- Advanced microprocessor control
- Auto changeover for cooling and heat

Cooling

Rated capacity 18,000 Btu/h
 Minimum capacity 8,000 Btu/h
 Total input 2240 W
 SEER 14.1
 Power supply 208 / 230V, 1 Phase, 60 Hz
 Breaker size 15 A

Heating

Rated capacity 19,000 Btu/h
 Minimum capacity 8,000 Btu/h
 Total input 2130 W
 HSPF (I/V) (Btu/h/W) 9.5 / 7.3

Voltage

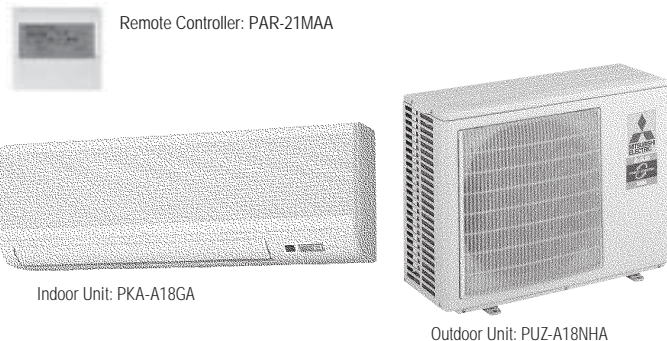
Indoor - outdoor S1-S2 AC 208/230V
 Indoor - outdoor S2-S3 DC 24V
 Indoor - remote controller DC

Indoor unit

MCA 1A
 Fan motor 0.33 F.L.A.
 Fan motor output 30 W
 Airflow (Lo-M1-M2-Hi) 320-350-390-425 Dry CFM
 290-315-350-380 Wet CFM
 Sound level (Lo-M1-M2-Hi) 36-38-41-43 dB(A)

DIMENSIONS	INCHES	MM
W	39	990
D	9-1/4	235
H	13-3/8	340

Weight (lbs/kg) 35 / 16
 Field drain pipe size I.D. (inches/mm) 3/4 / 19.05



Outdoor unit

Compressor DC inverter/twin rotary
 MCA 13
 Fan motor 0.35 F.L.A.
 Sound level 46 dB(A)

DIMENSIONS	INCHES	MM
W	31-1/2	800
D	13 + 7/8	330 + 23
H	23-5/8	600

Weight (lbs/Kg) 90 / 41
 Refrigerant type R410A
 Refrigerant pipe size O.D. (inches/mm)
 gas side 1/2 / 12.7
 liquid side 1/4 / 6.35
 Max. refrigerant pipe length (ft/m) 100 / 30
 Max. refrigerant pipe height difference (ft/m) 100 / 30
 Connection method flared

NOTES :

- *1. Rating conditions (cooling)-indoor : D.B. 80°F, W.B. 67°F
 outdoor : D.B. 95°F, W.B. 75°F.
- *2. Rating conditions (heating)-indoor : D.B. 70°F, W.B. 60°F outdoor : D.B. 17°F, W.B. 15°F.

Operating range

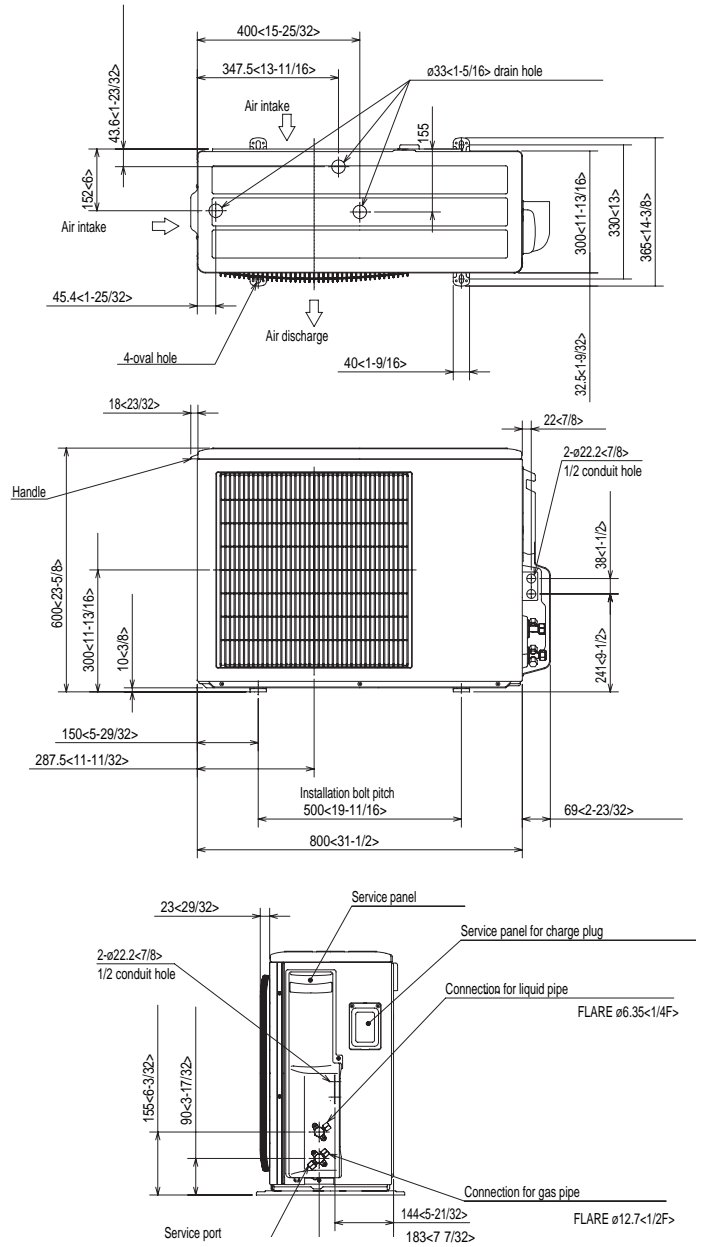
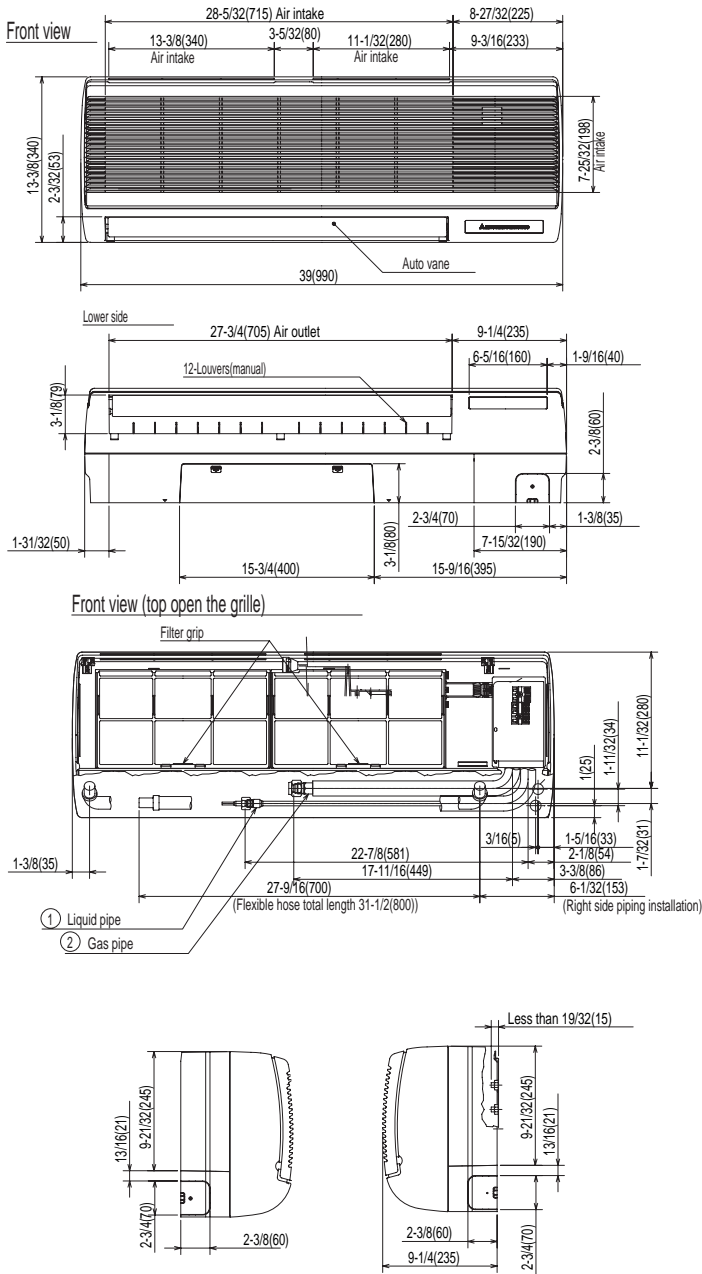
Cooling	Indoor intake air temp.		Outdoor intake air temp.	
	Maximum	D.B. 95°F, W.B. 71°F	D.B. 115°F	
Minimum	D.B. 67°F, W.B. 57°F	D.B. 0°F *		
Heating	Maximum	D.B. 80°F, W.B. 67°F	D.B. 70°F, W.B. 59°F	
	Minimum	D.B. 70°F, W.B. 60°F	D.B. 12°F, W.B. 10°F	

* With wind baffle installed. If not installed, the minimum rated temperature is 23°FDB.



Notes:

DIMENSIONS: PKA-A18GA & PUZ-A18NHA



HVAC Advanced Products Division
Mitsubishi Electric & Electronics USA, Inc.

3400 Lawrenceville Suwanee Rd
Suwanee, GA 30024
Tele: 678-376-2900 • Fax: 800-889-9904
Toll Free: 800-433-4822 (#3)
www.mehvac.com
Specifications are subject to change without notice.

Job Name: _____ Location: _____ Date: _____

Purchaser: _____ Engineer: _____

Submitted to: _____ For Reference Approval Construction

Unit Designation: _____ Schedule No.: _____

GENERAL FEATURES

- Limited warranty: one year on parts and defects and six years on compressor
- Compact side-discharge outdoor unit
- Zone control
- Wireless remote controller
- Automatic fan speed control
- Quiet operation – both, indoor and outdoor units
- Auto restart following a power outage
- Self check function
- Advanced microprocessor control
- Auto changeover for cooling and heat

Cooling

Rated capacity 18,000 Btu/h
Minimum capacity 8,000 Btu/h
Total input 2240 W
SEER 14.1
Power supply 208 / 230V, 1 Phase, 60 Hz
Breaker size 15 A

Heating

Rated capacity 19,000 Btu/h
Minimum capacity 8,000 Btu/h
Total input 2130 W
HSPF (I/V) (Btu/h/W) 9.5 / 7.3
COP 8.9 Btu/h/W

Voltage

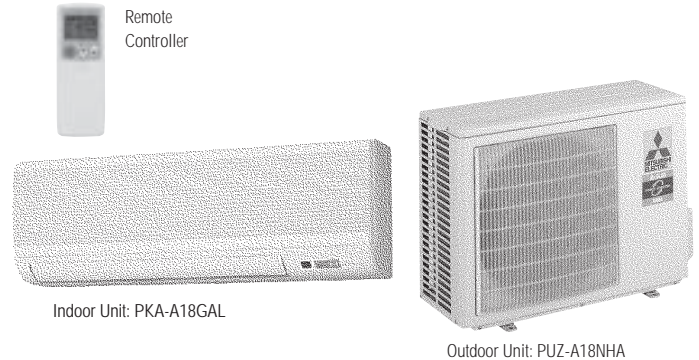
Indoor - outdoor S1-S2 AC 208/230V
Indoor - outdoor S2-S3 DC 24V
Indoor - remote controller DC

Indoor unit

MCA 1A
Fan motor 0.33 F.L.A.
Fan motor output 30 W
Airflow (Lo-M1-M2-Hi) 320-350-390-425 Dry CFM
290-315-350-380 Wet CFM
Sound level (Lo-M1-M2-Hi) 36-38-41-43 dB(A)

DIMENSIONS	INCHES	MM
W	39	990
D	9-1/4	235
H	13-3/8	340

Weight (lbs/kg) 35 / 16
Field drain pipe size I.D. (inches/mm) 3/4 / 19.05



Outdoor unit

Compressor DC inverter/twin rotary
MCA 13
Fan motor 0.35 F.L.A.
Sound level 46 dB(A)

DIMENSIONS	INCHES	MM
W	31-1/2	800
D	13 + 7/8	330 + 23
H	23-5/8	600

Weight (lbs/Kg) 90 / 41
Refrigerant type R410A
Refrigerant pipe size O.D. (inches/mm)
gas side 1/2 / 12.7
liquid side 1/4 / 6.35
Max. refrigerant pipe length (ft/m) 100 / 30
Max. refrigerant pipe height difference (ft/m) 100 / 30
Connection method flared

NOTES :

- *1. Rating conditions (cooling)-indoor : D.B. 80°F, W.B. 67°F outdoor : D.B. 95°F, W.B. 75°F.
- *2. Rating conditions (heating)-indoor : D.B. 70°F, W.B. 60°F outdoor : D.B. 17°F, W.B. 15°F.

Operating range

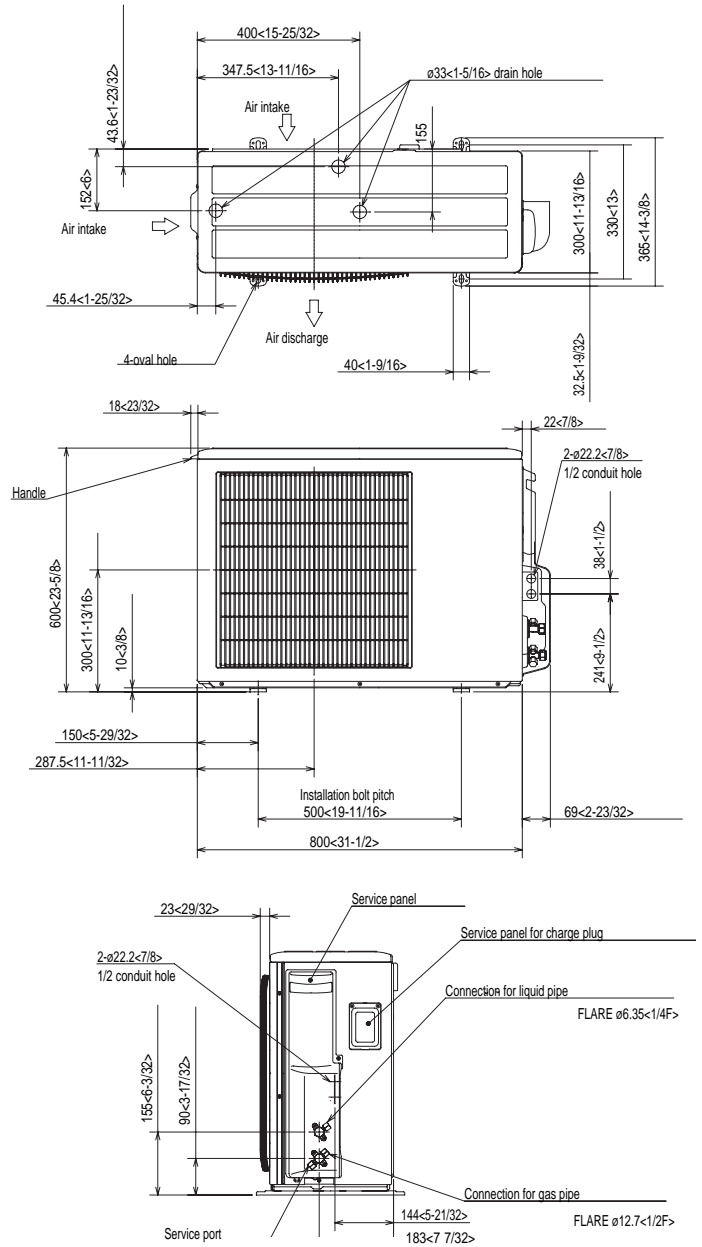
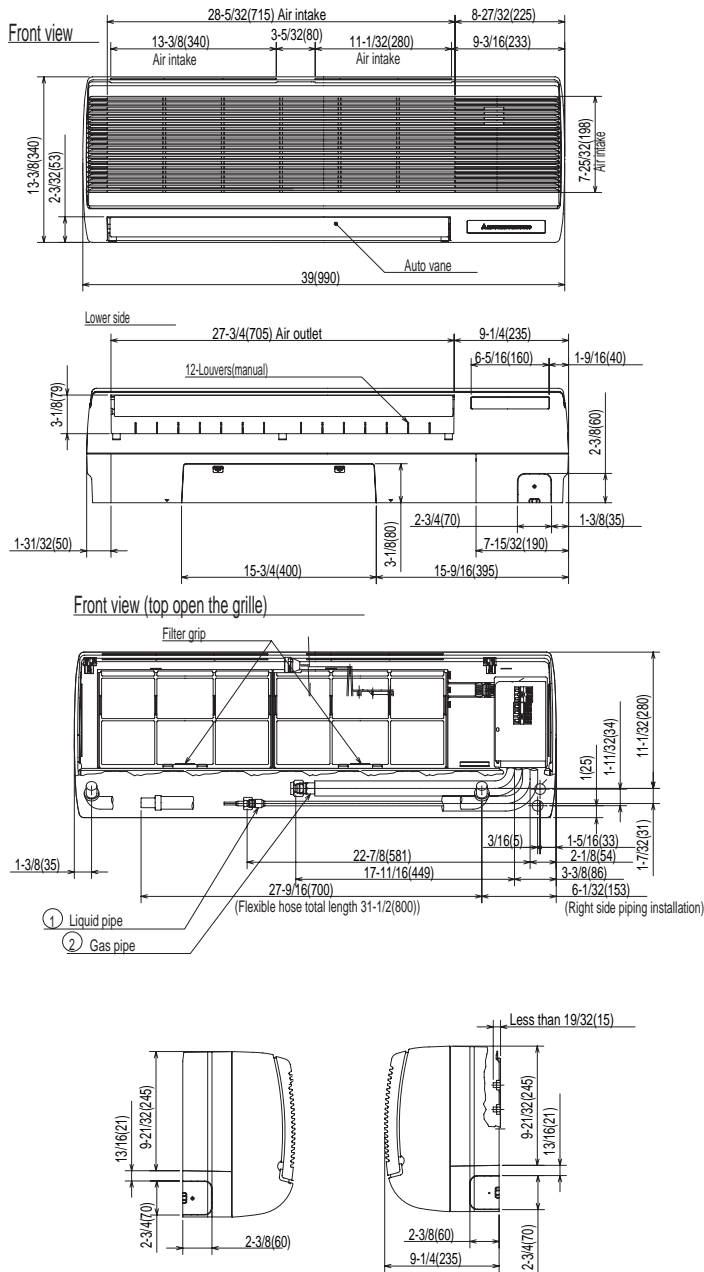
		Indoor intake air temp.	Outdoor intake air temp.
Cooling	Maximum	D.B. 95°F, W.B. 71°F	D.B. 115°F
	Minimum	D.B. 67°F, W.B. 57°F	D.B. 0°F *
Heating	Maximum	D.B. 80°F, W.B. 67°F	D.B. 70°F, W.B. 59°F
	Minimum	D.B. 70°F, W.B. 60°F	D.B. 12°F, W.B. 10°F

* With wind baffle installed. If not installed, the minimum rated temperature is 23°FDB.



Notes:

DIMENSIONS: PKA-A18GAL & PUZ-A18NHA



HVAC Advanced Products Division
Mitsubishi Electric & Electronics USA, Inc.

3400 Lawrenceville Suwanee Rd
Suwanee, GA 30024
Tele: 678-376-2900 • Fax: 800-889-9904
Toll Free: 800-433-4822 (#3)
www.mehvac.com
Specifications are subject to change without notice.